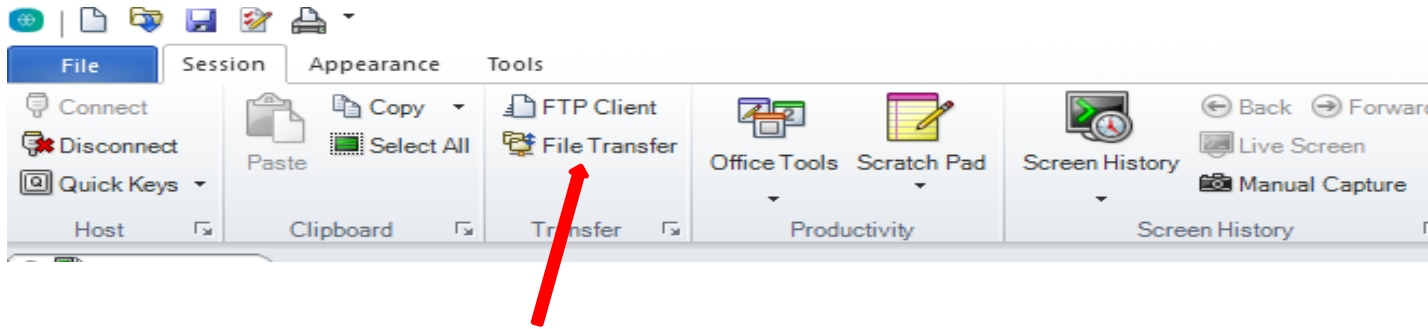


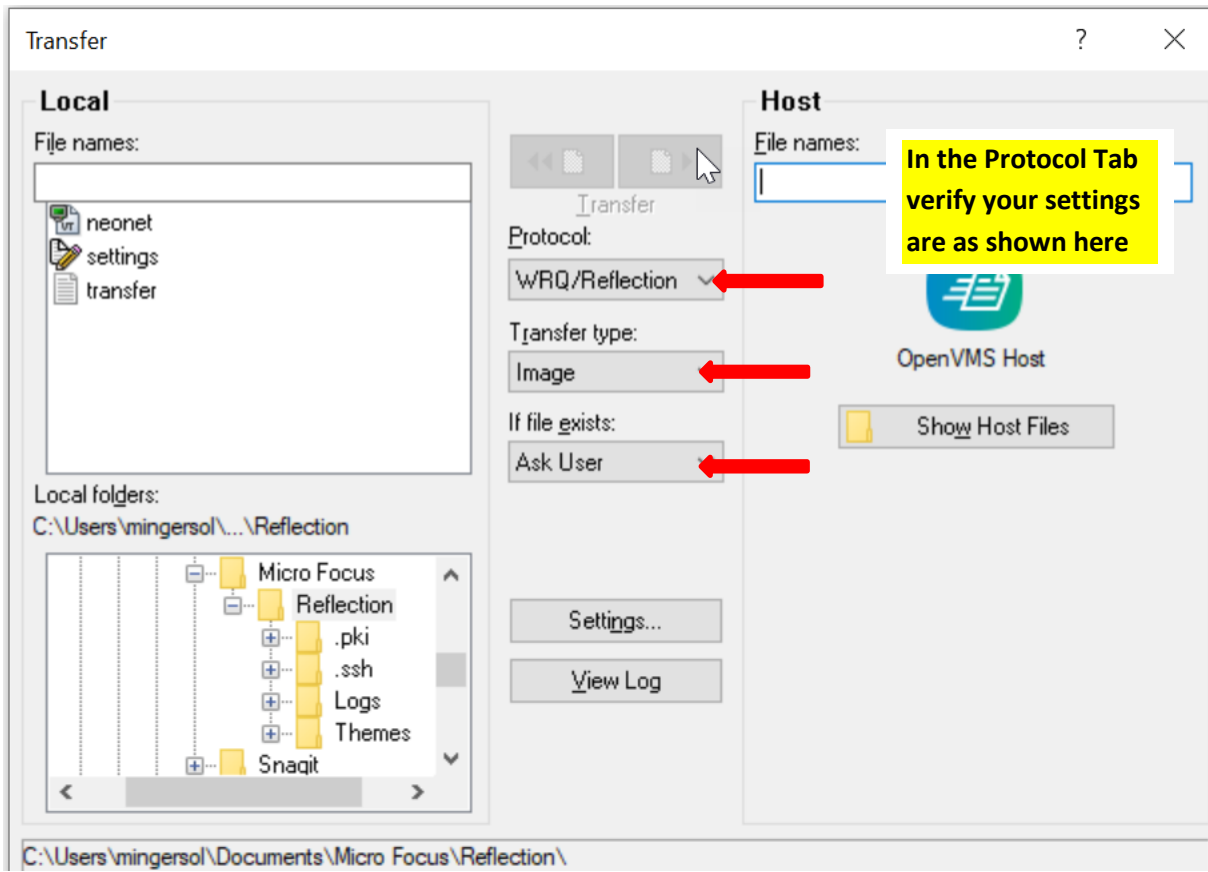
FILE TRANSFER COMPUTER SETTINGS FOR PDF FILES

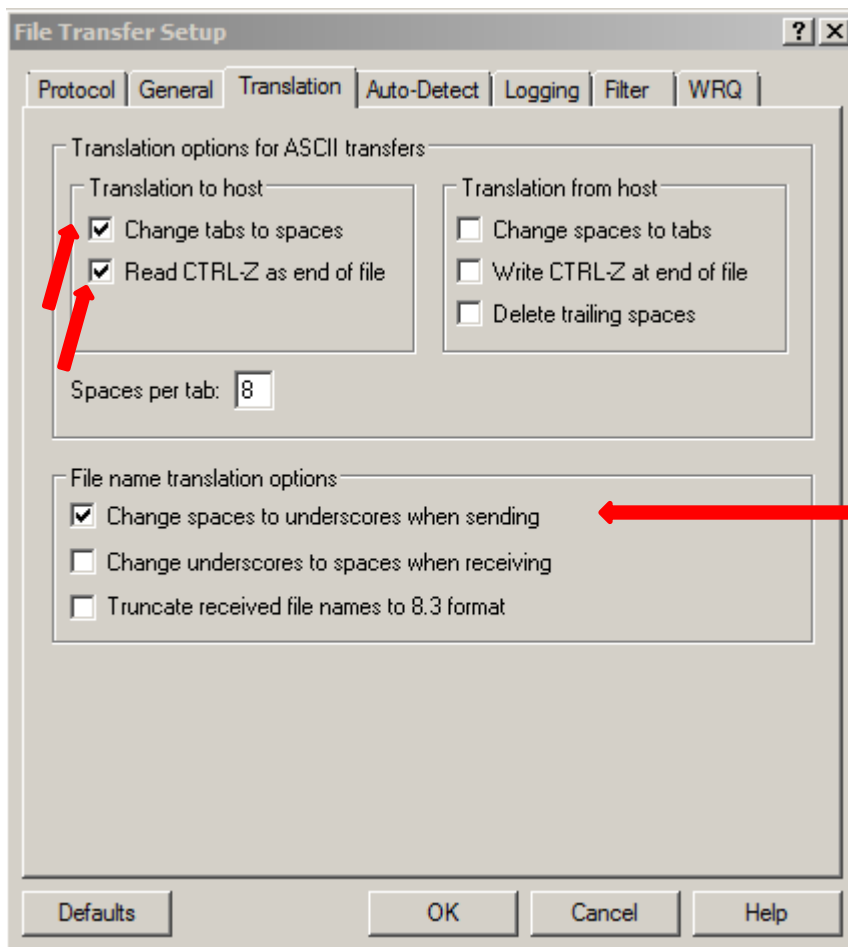
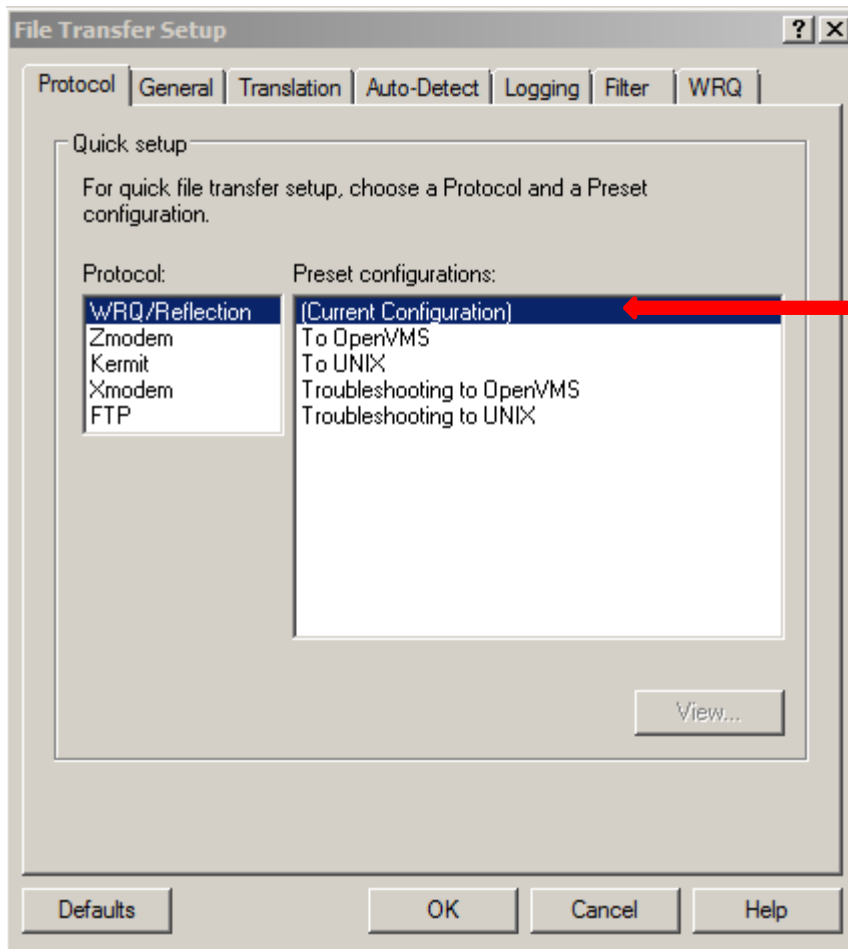
To check the your File Transfer settings, click File Transfer as shown below

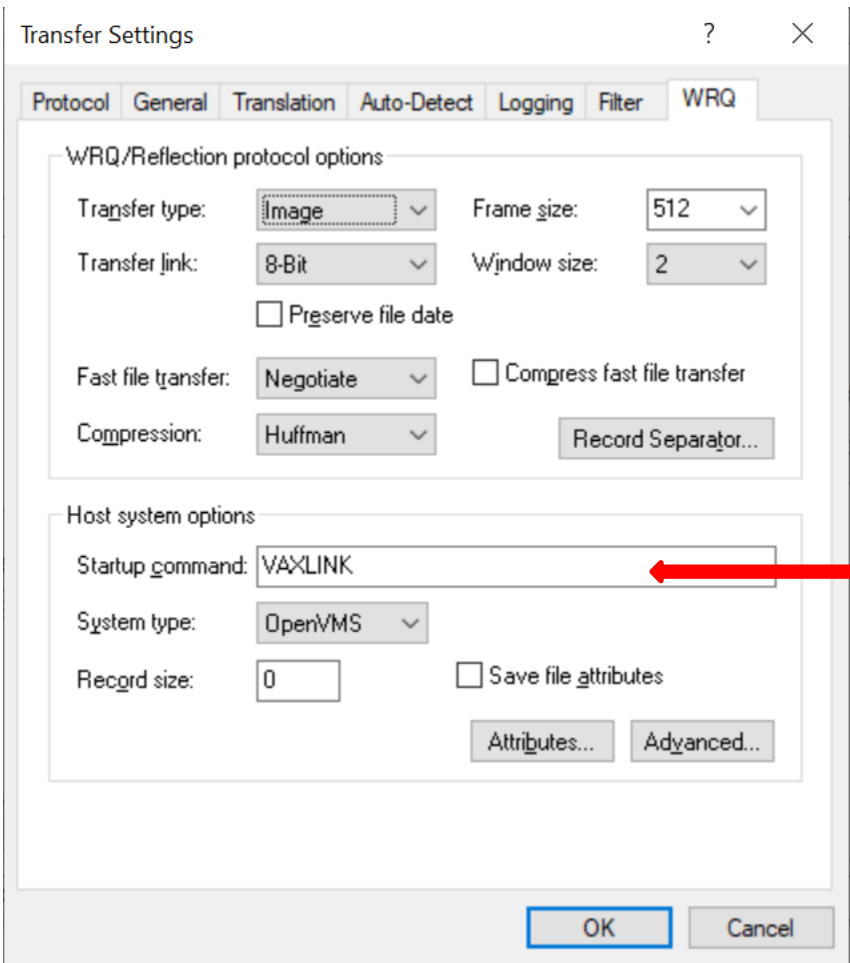


Verify your Protocol, Transfer Type & If File Exists are as shown below

ASCII is correct for most file transfers, however, Image setting is needed for pdf file transfers.







In the WRQ Tab verify your settings are as shown here